

2025

THRIVE^{TOP} 50

AgTech

Redefining the future of agriculture with bold leadership, breakthrough innovation, and a deep commitment to sustainability.



THRIVE
by SVG VENTURES



THRIVE Global Impact *Summit*

October 29 - 30, 2025

➤ Are you passionate about the future of agrifoodtech and the role of technology in shaping it?

The THRIVE Global Impact Summit is a premier event bringing together 400+ innovators, investors, and industry leaders to tackle the most pressing challenges in agriculture and food sustainability. Through dynamic panels, startup showcases, and networking opportunities, the summit drives collaboration and advances solutions for a sustainable future. This event also marks the culmination of our global search for breakthrough Agrifoodtech and Climate Tech solutions, featuring live pitches from the finalists of the 2025 THRIVE Global Impact Challenge.



Join us for the 2025 THRIVE Global Impact Summit

Stay up to date on our Global Impact Initiatives and join us in making a difference.

Acknowledgement



John Hartnett
CEO at
SVG Ventures |
THRIVE

We're thrilled to unveil the 2025 THRIVE Top 50 AgTech report, showcasing the leading innovators in this sector.

Congratulations to these groundbreaking companies. Your work is pivotal in advancing a sustainable and efficient agriculture sector.

In 2024, AgTech investment slowed but remained focused on proven, impact-driven technologies. Precision agriculture and biotech continued to attract attention, as investors prioritized automation, AI, and climate-resilient solutions. Indoor farming, however, faced ongoing headwinds, reflecting a shift away from capital-intensive models. Exit activity was limited, with many startups turning to partnerships over public listings. Looking ahead to 2025, the sector is poised for renewed momentum, with investor confidence centering on scalable innovations that advance food security and sustainability.

Special thanks to our SVG Ventures | THRIVE research and investment team, who have evaluated thousands of companies across the sector to curate this year's list of market leaders.

The process of developing this list has taken several months, as we have carefully assessed cutting-edge technologies and business models to identify those that are successfully scaling. AgTech continues to be a distinct and dynamic sector, where cross-disciplinary innovations come together to tackle some of the planet's most critical challenges. This report highlights the pioneering companies driving that evolution—shaping the future of technology and sustainability in agriculture and food systems.

I invite you to join us at the THRIVE Global Impact Summit in Silicon Valley on October 29th and 30th, where you will have the opportunity to meet the THRIVE Top 50 companies and engage with industry leaders shaping the future of agrifoodtech.

As we look ahead, let's champion these 50 companies as they continue to push boundaries, tackle critical issues in the agriculture industry, and drive global impact.



TABLE OF CONTENTS

5	THRIVE Ecosystem
6	Our Vision - About SVG Ventures THRIVE
7	Selection Criteria
8	THRIVE Team
10	AI Powered Agriculture
15	Top 50 AgTech
68	AgTech Market Map
69	Rising Stars
72	Thank you to our Partners

THRIVE ECOSYSTEM

SVG Ventures | THRIVE is a leader in the agrifoodtech space. Headquartered in Silicon Valley with offices in Canada, Europe, and Australia, our platform comprises of 6 early-stage programs, corporate innovation offerings, and an investment arm. We are focused on collaborating with those across our ecosystem, from cutting-edge startups to Fortune 500 companies,

with a common goal of advancing the sustainability of food and agriculture through innovation. Our ecosystem comprises of 40+ partners, made up of a range of corporations, cooperatives, governments, industry associations, and research organizations. Through these ongoing collaborative efforts with our ecosystem, THRIVE has made 100+

investments, developed a database of 10,000+ global agrifoodtech startups, and supported startups who have created \$1.6B in total value. For these actions, THRIVE was acknowledged as the #1 AgTech accelerator by AgFunder and recognized by Pitchbook as the most active AgTech Investor.



OUR VISION

Advancing food, agriculture and energy sectors for a more sustainable future.

#1

Most Active Agtech Investor
Pitchbook, 2022

300+

Companies
Accelerated

50+

Corporate & Government
Clients

100+

Investments

100+

Countries Reached

\$2+ billion

Value Created

5,000+

Jobs created

12,000+

Global founder private
network

200+

Mentor network

Get in touch

www.thriveagrifood.com | thrive@svgventures.com | [@THRIVEAgriFood](https://twitter.com/THRIVEAgriFood)

SELECTION CRITERIA

We have published the AgTech list for the last eight years. The goal of this report? To uncover and highlight the leading venture-backed scale-ups in the AgTech space. These companies are succeeding at scaling their business while focusing on developing innovative and sustainable solutions.

The THRIVE team developed this report by combining proprietary data analysis with deep industry insight gathered from a broad network of partners, corporations, and startups. Our selection process integrates both quantitative metrics—such as funding, valuation, and revenue—and qualitative factors, including team strength, market traction, sustainability efforts, and overall impact potential. By layering these inputs through a proprietary algorithm, we've identified companies that are not only addressing critical challenges in AgTech but are also demonstrating meaningful progress and resilience, even amid a shifting venture capital landscape.

All companies and deals featured in the Top 50 AgTech Report were considered based on information available up to March 2025. We would like to acknowledge and thank PitchBook for providing valuable data and insights that supported our research and evaluation process.

The categories covered in the AgTech report touch upon critical areas in the value chain, including: Controlled Environment Agriculture; Animal Technology; On Farm Decisions, Automation & Robotics; Novel Crop Inputs; and Agribusiness Platform.

Collaboration has been a key factor in the advancement of the agrifoodtech industry, with the THRIVE platform being no exception. For the past 3 years, the THRIVE team has hosted the THRIVE Global Impact Summit in Silicon Valley serving as a platform to address pressing challenges in AgTech Innovation, including climate change and sustainability. The summit provides key insights into the future of the industry while fostering valuable connections among top industry leaders, global entrepreneurs driving innovation, investors, and thought leaders. Attendees will also hear from leading Top 50 companies that are tackling major industry challenges, offering firsthand perspectives on scaling success and innovation.

Around the Global Impact Summit, we will be convening industry leaders, discussing key challenges in the industry, and working together to solve them through collaboration, advancing sustainability and innovation in the process.

We are excited for you to read this year's report, offering valuable insights into the companies scaling the ever-changing agrifoodtech industry.

THRIVE Team Acknowledgements

- Sofi Aguilera, Program Associate, Lead Author
- Jessica Hockedy, Research Associate
- Michelle Xu, APAC Associate
- Danny O'Brien, Managing Director EMEA & Global Programs
- Helen Hartnett, Chief Operating Officer
- Laura Parker, Marketing and Events Associate
- Jason Convey, Sunrise Fund Analyst

THRIVE TEAM



John Hartnett
CEO & Founder



Helen Hartnett
Chief Operating Officer



Carin Gerhardt
Director of Corporate Programs



John Cassidy
Managing Director Canada



Danny O'Brien
Managing Director EMEA
& Global Programs



Greg Young
Venture Partner



Paula Elliott
Senior Operations Manager



Marion Meyer
Senior Advisor



Peter Eckes
Senior Advisor



Ricky Stephens
Senior Corporate Innovation
& Operations Manager



Coleton Fisher
Academy Program
Manager



Dawn Trautman
Senior Corporate Innovation &
Venture Studio Manager



THRIVE TEAM



Hozana Sicairos
Executive Assistant



Hugo Bieber
APAC Startup Programmes Manager



Jason Convey
Sunrise Fund Analyst



Jessica Hockedy
Research Associate



Justin Massar
Canada Accelerator Manager



Laura Parker
Marketing & Events Associate



Lisa Merdjan
Head of Canada Programs



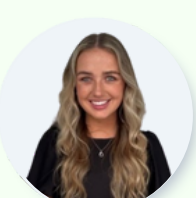
Megan Croft
Ecosystem and Partnership
Operations Manager



Michelle Xu
APAC Associate



Sofi Aguilera
Program Associate



Aimee Elliott
Canada Programs
Associate



AI-POWERED AGRICULTURE:

UNLOCKING NEW POSSIBILITIES FOR FARMERS

Agriculture is on the threshold of a remarkable transformation, powered by rapid advancements in computational power, artificial intelligence (AI) and automation options. From optimizing planting schedules to automating tedious tasks, AI-enabled solutions have the potential to reshape the way farmers operate and make decisions.

With mounting climate pressures, labor shortages and a growing population, the demand for resource-efficient, innovative farming methods has never been greater. In this article, we explore core AI-driven technologies—from farm management platforms and robotics to advanced data-driven models that power predictive analytics, intelligent recommendations, and innovative product development—and examine how they are revolutionizing the agricultural sector. Ultimately, these innovations will pave the way to a more resilient agrifood system.



Hadar Sutovsky

*ICL Group, VP Corporate Investments &
General Manager of ICL Planet Startup Hub*



“There are critical gaps in the agrifoodtech space where innovation could be enhanced. One key area is climate resilience and regenerative agriculture. While these practices are gaining attention, there’s a lack of scalable technologies to implement them efficiently. AI and data-driven solutions could accelerate adoption, improving soil health, carbon sequestration, and crop resilience in the face of climate change.

Key AI-Driven Technologies Revolutionizing Farming

Artificial intelligence is not only enhancing how we grow food—it’s redefining the entire agricultural value chain. From software to sensors to biology, AI is becoming the catalyst for smarter decisions, greater efficiency, and more sustainable outcomes. In this section, we explore five key innovation areas where AI is driving meaningful change: Integrated Agribusiness Platforms & Decision Support, Intelligent Automation and Robotics, Controlled Environment Agriculture (CEA), Animal Technology, and Novel Crop Input Discovery.

Integrated Agribusiness Platforms & Decision Support

The next generation of agribusiness platforms is combining AI with real-time data to power end-to-end farm and supply chain decisions. These systems serve as intelligence hubs—linking weather forecasts, soil sensors, satellite imagery, and historical records to provide actionable insights. From input optimization and planting schedules to risk mitigation and financial planning, AI helps growers, cooperatives, and agribusinesses make smarter, faster decisions with measurable impact on yields and margins.

AI-POWERED AGRICULTURE:

UNLOCKING NEW POSSIBILITIES FOR FARMERS

Intelligent Automation and Robotics

Field robotics is advancing rapidly, driven by intelligent systems that bring precision and autonomy to core farming tasks. Machine vision-guided robots and autonomous machinery now handle tasks like seeding, thinning, weeding, and harvesting with unprecedented precision. These systems continuously learn from field conditions, enabling site-specific interventions that reduce labor needs, increase efficiency, and adapt to changing environmental pressures in real time.

Controlled Environment Agriculture (CEA)

In CEA systems such as vertical farms and greenhouses, AI is orchestrating thousands of variables—light, temperature, humidity, and nutrient levels—to optimize plant growth. These systems learn from crop performance over time, allowing growers to tailor environments to each growth stage. This results in consistent quality, less resource waste, and the ability to scale indoor farming even in regions with limited arable land.

Animal Technology

AI is unlocking new capabilities in animal agriculture through predictive health monitoring, behavioral analysis, and precision feeding. By processing data from wearables, environmental sensors, and computer vision, AI can detect early signs of disease or stress—often before visual symptoms appear. These insights empower livestock and aquaculture producers to intervene sooner, enhance animal welfare, and optimize productivity.

Novel Crop Input Discovery

The development of next-generation biological crop inputs is being transformed by machine learning tools that accelerate discovery and optimize performance. Machine learning models can scan massive chemical and biological libraries to identify promising molecules, predict their performance, and simulate interactions with crops and environments. This shortens development cycles, cuts R&D costs, and enables more targeted, sustainable solutions for future food production.



AI-POWERED AGRICULTURE: UNLOCKING NEW POSSIBILITIES FOR FARMERS



Tom Greene

Sr. Director, Global Leader Corteva Catalyst,
External Innovation Investment, R&D
Corteva Agriscience



“ We see significant opportunities in areas such as protein engineering, AI-driven crop management, and scalable biological solutions. For instance, while gene editing and biologicals have seen considerable advancement, there remains room for innovation in areas like protein design for crop resilience, plant breeding technology platforms, and AI driven tools to enhance decision-making on farms.



LEADING AI-DRIVEN AGTECH INNOVATORS



From precision equipment and plant diagnostics to carbon tracking and crop input discovery, AI is being embedded into AgTech solutions across the value chain. Many of this year's Top 50 AgTech companies are integrating AI to increase efficiency, sustainability, and resilience in farming operations. Below, we highlight a few standout innovators from each category who are leading the charge with intelligent, data-driven technologies.

- [Monarch Tractor](#)'s MK-V is an autonomous, electric tractor powered by the WingspanAI platform, giving farmers real-time fleet visibility and remote control. It reduces labor needs and emissions while optimizing task planning and operational efficiency.
- [BeeHero](#) uses AI and in-hive sensors to monitor pollination activity and bee health with precision. The platform helps maximize crop yields, detect stress early, and ensure effective pollination.
- [iUNU](#)'s LUNA platform uses AI, machine vision, and plant science to monitor greenhouse crops in real time. It helps growers optimize conditions to boost yields, reduce waste, and maintain consistent production.
- [Micropep](#) applies AI to develop micro-peptides that naturally regulate plant growth and resilience. Its biotech-driven approach enables more sustainable crop input solutions with improved productivity.
- [Agreena](#) leverages AI and satellite data to verify regenerative agriculture practices and generate soil carbon credits. Its platform supports farmers in scaling sustainability efforts and participating in carbon markets.

LEADING AI-DRIVEN AGTECH INNOVATORS

AI isn't limited to the most established players. A new generation of startups is applying AI in transformative ways to reshape agricultural research, diagnostics, and field decision-making.

Here are a few from our Rising Stars list that are making notable strides:

- [Agrematch](#) uses a proprietary AI engine to accelerate the discovery of sustainable crop protection and nutrition compounds. By simulating biological interactions and analyzing large datasets, it identifies effective bioactive molecules faster and with less trial and error.
- [Micron Agritech](#) delivers rapid, AI-powered parasite diagnostics for livestock via a mobile-enabled platform. It helps farmers make quick, data-driven treatment

Together, these companies demonstrate how AI is unlocking new possibilities in agriculture—from enhancing on-farm decision-making to accelerating product development and improving sustainability metrics. As innovation continues to evolve, AI is not only enhancing efficiency but also laying the groundwork for a more adaptive, resilient, and intelligent global food system. The companies featured here are just a glimpse into a broader movement where data and technology converge to tackle agriculture's biggest challenges.



Graeme Millen

*VP Strategic Finance & Business Development
FCC Capital*



There is a wide array of innovation and technology being developed across all areas of agriculture and food, however there is an opportunity for more cross-company, and cross-sector, collaboration to help drive innovation.

Broader Perspectives and Future Outlook

The rapid adoption of AI across agriculture signals a pivotal shift—but realizing its full potential will require more than just innovation. True transformation depends on deeper collaboration across the value chain, where farmers, technologists, researchers, and agribusinesses work together to generate high-quality, diverse datasets and build more adaptive, transparent AI systems. Many of the Top 50 AgTech companies featured in this report are not only advancing groundbreaking solutions—they are also redefining how agricultural data is captured, shared, and applied. As these technologies evolve, the broader outlook is one of intelligent, connected food systems that are more resilient to climate pressures, more efficient in resource use, and more equitable in outcomes. With continued investment, supportive policy, and cross-sector alignment, AI is poised to unlock a more sustainable and secure global food future.

THRIVE^{TOP} 50

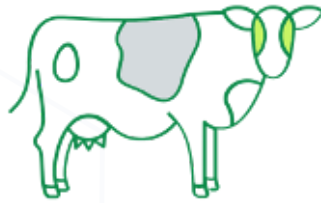
AgTech



AGTECH TOP50 CATEGORIES



**CONTROLLED
ENVIRONMENT
AGRICULTURE**



**ANIMAL
TECHNOLOGY**



**ON FARM DECISIONS
SUPPORT, AUTOMATION
& ROBOTICS**



**NOVEL CROP
INPUTS**



**AGRIBUSINESS
PLATFORM**

THRIVE^{TOP} 50 AgTech Summary

18	AcreTrader	43	InnovaFeed
19	Agreena	44	iUNU
20	AgriWebb	45	Little Leaf Farms
21	AgVend	46	Micropep
22	Aphea.Bio	47	Milk Moovement
23	Arable	48	Monarch Tractor
24	BeeHero	49	NewLeaf Symbiotics
25	Bluewhite	50	Oishii
26	Burro	51	Pairwise
27	Bushel	52	ProducePay
28	Carbon Robotics	53	Provivi
29	Ceres AI	54	Regrow
30	CH4 Global	55	SeeTree
31	CIBO Technologies	56	Sentera
32	DeHaat	57	Sistema.bio
33	EarthOptics	58	Solinftec
34	EcoRobotix	59	Sound Agriculture
35	Elicit Plant	60	Taranis
36	Entosystem	61	Traive
37	Gotham Greens	62	Tropic Biosciences
38	Greeneye Technology	63	Verdant Robotics
39	Guardian Agriculture	64	Vestaron
40	Halter	65	Vive Crop Protection
41	IGS	66	Vytelle
42	Inari	67	Windfall Bio

**Category:**

Agribusiness Platform

Website:

www.acretrader.com

Headquarters:

Fayetteville, AR, USA

Year Founded:

2017

Main Investors:

Anthemis Group
Drive Capital
RZC Investments
Narya Capital
Rise of the Rest Fund
Revel Partners
Jump Capital

Corporate Partnerships:

Alto IRA

acretrader

Company Overview

AcreTrader is an innovative agribusiness platform dedicated to creating a transparent and accessible land market. Through advanced technology, data, and expertise, they empower investors with direct access to high-quality farmland, offering diversification and passive investments, all backed by rigorous due diligence. For farmers, AcreTrader provides crucial funding to scale their operations, facilitating growth and connecting them with a supportive network of investors.

Employees

70

Company Stage

Late Stage (Series B)

Total Raised to Date

\$80M

Latest Funding Round

\$60.81M

Late stage VC (Series B), 26 July 2022,
Valuation Undisclosed

**Category:**

Agribusiness Platform

Website:

www.agreena.com

Headquarters:

Copenhagen, Denmark

Year Founded:

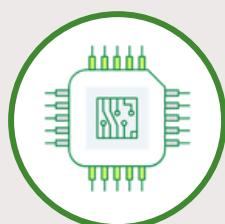
2018

Main Investors:

Giant Ventures
Gullspång Re:food
HV Capital
Kinnevik
AENU
Anthemis
Denmark's Export &
Innovation Fund

Corporate Partnerships:

IFC
Al Dahra
Redshaw Advisors
Raiffeisen Bank
AXA Climate
Mars
Ryanair
Mapfre
Senken
Helical
Terrapass

Artificial Intelligence

Agreena

Company Overview

Headquartered in Denmark, Agreena leads Europe's largest soil carbon programme, powering the shift to resilient food systems. Its AgreenaCarbon project is the first large-scale cropland initiative under Verra's Verified Carbon Standard. Spanning 4.5M hectares across 20 markets, Agreena finances farmer transitions and uses AI-driven dMRV to convert on-farm impact into corporate climate action, responsible sourcing, and green finance.

Employees

160

Company Stage

Late Stage (Series B)

Total Raised to Date

\$80M

Latest Funding Round

\$53M

Late stage VC (Series B), March 2023,
\$166.69m Post Valuation, as of 13 May 2024

**Category:**

Animal Technology

Website:

www.agriwebb.com

Headquarters:

Sydney, Australia

Year Founded:

2014

Main Investors:

Clinton Capital Partners
Cottagequinn Enterprises
Germin8 Ventures
iSelect Fund
StartX (US)
TELUS Global Ventures
Virescent Ventures

Corporate Partnerships:

USDA
Trust in Food
RanchBot

**Company Overview**

Developer of a SaaS platform aimed at transforming the sustainability of beef production. The platform enables real-time, even offline, data collection to boost productivity, reduce emissions, and ensure transparency. It also offers tools for paddock treatment and crop recording, allowing farmers to track, analyze, and manage farm inventories, pasture, and livestock through a cloud-based record-keeping system.

Employees

75

Company Stage

Late Stage (Series B)

Total Raised to Date

\$52M

Latest Funding Round

\$7M

Late stage VC (Series B), 6 May 2024,
\$70.27M Post Valuation, as of 22 May 2023

**Category:**

Agribusiness Platform

Website:

www.agvend.com

Headquarters:

Austin, TX, USA

Year Founded:

2017

Main Investors:

Tidemark
8VC
Greenbay
DNX
FJ
Liquid2
Percursor

Corporate Partnerships:

Bayer
Corteva
Syngenta
John Deere
CHS Inc.
Cooperative Finance
Association

AgVend

Company Overview

Developer of a comprehensive digital engagement platform tailored to modernize agribusiness operations. By integrating customer relationship management, real-time analytics, and automated communications, the platform enhances operational efficiency, drives revenue growth, and strengthens the overall customer experience.

Employees

146

Company Stage

Late Stage (Series B)

Total Raised to Date

\$36M

Latest Funding Round

\$15M

Late stage VC (Series B), 10 Feb 2025,
Valuation Undisclosed

**Category:**

Novel Crop Inputs

Website:

www.aphea.bio

Headquarters:

Ghent, Belgium

Year Founded:

2017

Main Investors:

Agri Investment Fund
Astanor Ventures
Bill & Melinda Gates
Foundation
ECBF Management
Qbic Fund
V-Bio Ventures
Vives Fund

Corporate Partnerships:

Bill & Melinda Gates
Foundation

**Company Overview**

Producer of agricultural inputs designed to boost crop yields and improve plant health. The company offers sustainable solutions to reduce fertilizer use and control fungal diseases, pests, and weeds—particularly in maize and wheat. Using proprietary technology, it also accelerates the discovery of new biocontrol and biostimulant products, helping farmers enhance crop performance and resilience.

Employees

64

Company Stage

Late Stage (Series C)

Total Raised to Date

\$115M

Latest Funding Round

\$76.38M

Late stage VC (Series C), 11 July 2023,
\$92.66M Post Valuation as of July 11 2023

**Category:**

Agribusiness Platform

Website:

www.arable.com

Headquarters:

San Francisco, CA, USA

Year Founded:

2014

Main Investors:

Alumni Ventures
Argonautic Ventures
iSelect Fund
Prelude Ventures
Cantos Ventures
Middleland Capital
S2G Investments
SVG Ventures
SparkLabs Group

Corporate Partnerships:

Google
Bayer Crop Science
Syngenta
Clos du Val Winery
D3Ag (Australia)

**Company Overview**

A crop analytics platform built to help agricultural businesses mitigate weather-related risks and optimize crop health through real-time, actionable insights. By leveraging field-based measurements and advanced data analytics, the platform delivers continuous visibility and predictive intelligence on crop development, yield forecasts, and harvest timing. This empowers growers and agri-enterprises to make smarter decisions in the moment—boosting efficiency and driving revenue growth.

Employees

97

Company Stage

Late Stage (Series C)

Total Raised to Date

\$73.47M

Latest Funding Round

\$40M

Late stage VC (Series C), 25 July 2022,
\$125M Post Valuation as of 25 July 2023

**Category:**

Animal Technology

Website:

www.beehero.io

Headquarters:

Fresno, CA, USA

Year Founded:

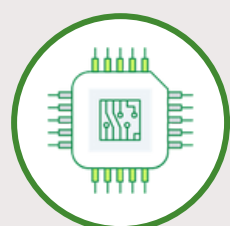
2017

Main Investors:

General Mills
Convent Capital
Rabobank
Cibus Capital (formerly ADM Capital)
MS&AD
Firsttime
J-Ventures
Plug&Play
iAngels
Gaingels
UpWest

Corporate Partnerships:

USDA

Artificial Intelligence**Company Overview**

BeeHero is a data-driven technology company redefining pollination in agriculture. Using data analytics, AI, and IoT sensors, BeeHero brings transparency and efficiency to commercial crop pollination. Its Precision Pollination as a Service results in better crop yields and profits for growers and agribusiness stakeholders. Its solution is rapidly evolving into the backbone of the data-driven approach needed to future-proof sustainable agriculture.

Employees

83

Company Stage

Late Stage (Series B)

Total Raised to Date

\$64M

Latest Funding Round

\$42M

Late stage VC (Series B), Undisclosed Date,
Undisclosed Valuation

**Category:**

On-Farm Decision Support,
Automations & Robotics

Website:

www.bluewhite.ai

Headquarters:

Tel Aviv, Israel

Year Founded:

2017

Main Investors:

CNH Ventures
Allied Group
Alumni Ventures
Entrée Capital
Insight Partners
Jesselson Capital
LIP Ventures Boutique
Peregrine Ventures
Regah Ventures
TELUS Global Ventures

Corporate Partnerships:

CNH
TELUS
NVIDIA

**Company Overview**

Bluewhite provides AI-driven off-road autonomous solutions that enhance productivity, quality, and safety. The Bluewhite autonomous stack enables conversion of off-road vehicles to fully autonomous operation, powered by advanced field intelligence AI and a multi-dimensional fleet management platform. Leveraging over 20 years of expertise in autonomous technologies, global talent, and cutting-edge AI, Bluewhite works with leading OEMs, enterprises, and governments to transform off-road operations into safe, resilient, and efficient systems.

Employees

110

Company Stage

Late Stage (Series C)

Total Raised to Date

\$100M

Latest Funding Round

\$39M

Late stage VC (Series C), 23 Jan 2024,
\$300M Post Valuation as of June 2025

**Category:**

On-Farm Decision Support,
Automations & Robotics

Website:

www.burro.ai

Headquarters:

Philadelphia, PA, USA

Year Founded:

2017

Main Investors:

Asimov Ventures
Everywhere Ventures
ff Venture Capital
F-Prime Capital
Plug and Play Tech Center
Radicale
S2G Investments
Thrive by SVG Ventures
Toyota Ventures
TransLink Capital
Western Growers Center for
Innovation & Technology
Xplorer Capital

Corporate Partnerships:

Fieldwork Robotics
John Deere Accelerator

**Company Overview**

Developer of robotic tools designed to support farm workers and boost productivity. These autonomous tools follow workers, transport cargo, and capture key operational data—laying the groundwork for automating repetitive and labor-intensive tasks on farms. The technology helps farmers enhance efficiency and scale operations more effectively.

Employees

63

Company Stage

Late Stage (Series B)

Total Raised to Date

\$45M

Latest Funding Round

\$24M

Late stage VC (Series B), 9 Jan 2024,
\$74M Post Valuation as of 9 Jan 2024

**Category:**

Agribusiness Platform

Website:

www.bushelpowered.com

Headquarters:

Fargo, ND, USA

Year Founded:

2011

Main Investors:

Cargill
Conti Ventures
Gen7 Investments
Germin8 Ventures
Lewis & Clark AgriFood

Corporate Partnerships:

ADM
Cargill
Scoular
The Andersons

BUSHEL®

Company Overview

Bushel is an independent software company in Fargo, N.D., providing digital tools for ag. Its platform supports CRM, payments, customer portals, grain trading and ag retail tools. Bushel connects over 3,500 grain and ag retail facilities—more than 50% of U.S. and Canadian grain origination—and 100,000+ farmers. It meets SOC 2 Type II standards for strong data security.

Employees

100

Company Stage

Late Stage (Series C)

Total Raised to Date

\$104M

Latest Funding Round

\$26.25M

Late stage VC (Series C), 13 Jul 2023,
\$169M Post Valuation as of 13 Jul 2023

**Category:**

On-Farm Decision Support,
Automations & Robotics

Website:

www.carbonrobotics.com

Headquarters:

Seattle, WA, USA

Year Founded:

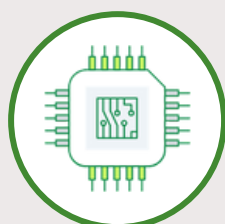
2018

Main Investors:

Anthos Capital
Bolt
BOND Capital
Fuse
Ignition Partners
Liquid 2 Ventures
NVentures
Revolution
Sozo Ventures
Voyager Capital
Western Growers Center for
Innovation & Technology

Corporate Partnerships:

AgDirect
GK Machine
NVIDIA

Artificial Intelligence**Company Overview**

Developer of robotics technology focused on autonomous weed control using advanced farming methods. The company builds intelligent, deep learning-powered robots designed to identify and eliminate unwanted plants, helping farmers optimize yields and transform traditional field operations through automation.

Employees

189

Company Stage

Late Stage (Series D)

Total Raised to Date

\$156M

Latest Funding Round

\$70M

Late stage VC (Series D), 17 Oct 2024,
Valuation Undisclosed

**Category:**

On-Farm Decision Support,
Automations & Robotics

Website:

www.ceres.ai

Headquarters:

Oakland, CA, USA

Year Founded:

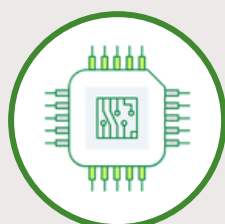
2013

Main Investors:

B37
Insight
Remus
Qunvolv
XTX

Corporate Partnerships:

Lyndsay
Bayer
BASF
Deere
Munich Re

Artificial Intelligence**Company Overview**

Provider of AI-driven technology designed to safeguard crop yields and enhance climate resilience. The platform equips farmers and stakeholders across the agricultural value chain with tools to maximize efficiency, optimize resource use, and focus expertise where it matters most. It enables real-time monitoring of pests, diseases, nitrogen levels, and crop hydration.

Employees

69

Company Stage

Late Stage (Series D)

Total Raised to Date

\$86M

Latest Funding Round

Undisclosed

Late stage VC (Series D), 22 Aug 2024,
\$85.53M Post Valuation as of 5 Sept 2023

**Category:**

Animal Technology

Website:

www.ch4global.com

Headquarters:

Henderson, NV, USA

Year Founded:

2018

Main Investors:

AgFunder
Chipotle Mexican Grill
Cleveland Avenue
DCVC
DCVC Bio
Mitsubishi Corporation
Webit Investment Network

Corporate Partnerships:

UPL Ltd.
Mitsubishi Corporation
Lotte Corporation

**Company Overview**

Operator of a feed additives company focused on reducing greenhouse gas emissions from ruminant animals to combat climate change at scale. The company's solution leverages Asparagopsis seaweed, scientifically proven to significantly reduce enteric methane emissions in feedlot cattle. This enables farmers and food producers to access carbon credits and premium market opportunities, while helping the broader food value chain dramatically lower its GHG footprint.

Employees

64

Company Stage

Late Stage (Series B)

Total Raised to Date

\$50M

Latest Funding Round

Undisclosed

Late stage VC (Series B), 15 Jan 2025,
\$115M Post Valuation as of 28 Aug 2023

**Category:**

Agribusiness Platform

Website:

www.cibotechnologies.com

Headquarters:

St. Louis Park, MN, USA

Year Founded:

2015

Main Investors:

Flagship Pioneering
Generation Investment
Management
Red Cedar Ventures
Stage 1 Ventures

Corporate Partnerships:

Truterra
Scoular
Parcel
DeLong
The Andersons

**Company Overview**

CIBO harnesses the power of technology and AI to make sustainable agriculture more profitable and scalable. By combining a best in class programs management platform, a Trusted Advisor Network with access to over 100M acres and advanced modeling and analytics, CIBO helps governments, businesses, and nonprofits efficiently scale conservation initiatives and demonstrate financial and environmental impact. CIBO has been named one of TIME's Top 100 GreenTech Companies in America in 2024.

Employees

43

Company Stage

Late Stage (Series C)

Total Raised to Date

Undisclosed

Latest Funding Round

\$30M

Late stage VC (Series C), 18 Apr 2022,
Valuation Undisclosed

**Category:**

Agribusiness Platform

Website:

www.agrevolution.in

Headquarters:

Patna, India

Year Founded:

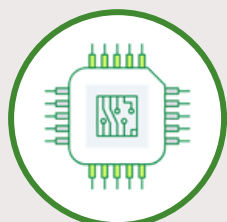
2012

Main Investors:

Sofina
Temasek
RTP Global
Prosus Ventures
Lightrock India
Peak XV Partners

Corporate Partnerships:

Undisclosed

Artificial Intelligence

DeHaat[®]

Company Overview

DeHaat is India's largest full-stack agritech platform, using AI to transform agriculture. With its 'Farmers First' vision, it offers agri-inputs, crop advisory, credit, insurance and market linkages. DeHaat engages 13M+ smallholder farmers across 122,000 villages, promoting sustainable agricultural practices and building a transparent food value chain with linkage within India & exports to 32 countries across 6 continents, contributing to food safety & security.

Employees

2000+

Company Stage

Late Stage (Series E)

Total Raised to Date

\$217M

Latest Funding Round

\$60M

Late stage VC (Series E), Dec 2022,
\$710M Post Valuation as of 19 Jan 2021

**Category:**

On-Farm Decision Support,
Automations & Robotics

Website:

www.earthoptics.com

Headquarters:

Minneapolis, MN, USA

Year Founded:

2018

Main Investors:

Argonautic Ventures
Leaps by Bayer
Cerity Partners Ventures
CNH Ventures
Conti Ventures
Cooperative Ventures
Earthshot Ventures
FHB Ventures
iSelect Fund
Louis Dreyfus Company Ventures
Middleland Capital
Pappas Capital
Rabo Investments
Route 66 Ventures
S2G Investments
Serra Ventures
Shell Ventures
The Production Board
Valor Capital Group
VTC Ventures

Corporate Partnerships:

Bayer
USDA NRCS
USDA
Indigo
Grassroots carbon
Shell
ExxonMobil
Lavoro
ADM
Cargill
Louis Dreyfus Company
Walmart
ESMC
Copalli Rum
Blueprint Soil Analytics
Audubon Society

**Company Overview**

EarthOptics is a data and service platform that measures and quantifies soil productivity through sampling, sensing, and lab testing. Its data products provide insights into compaction, fertility, pests, pathogens, biofertility, and carbon. Over 4 million acres have been analyzed, supporting a growing number of stakeholders, including carbon developers, agribusinesses, seed dealers, and ag retailers across the U.S.

Employees

99

Company Stage

Late Stage (Series B)

Total Raised to Date

\$100M

Latest Funding Round

\$55M

Late stage VC (Series B), 19 Nov 2024,
\$105Post Valuation as of 19 Nov 2024



**Category:**

On-Farm Decision Support,
Automations & Robotics

Website:

www.ecorobotix.com

Headquarters:

Yverdon-les-Bains, Switzerland

Year Founded:

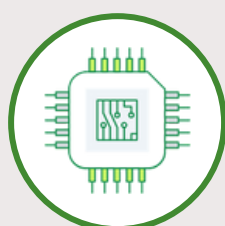
2014

Main Investors:

4FOX Ventures
BASF Venture Capital
Capagro
Swisscom Ventures
Verve Ventures
Yara Growth Ventures
AQTON
Cibus Capital
Flexstone
Swisscanto

Corporate Partnerships:

Undisclosed

Artificial Intelligence**Company Overview**

Ecorobotix is a Swiss company dedicated to revolutionizing agriculture through artificial intelligence and high-precision technology. Ecorobotix focuses on reducing chemical and energy use while minimizing soil impact. The ARA smart sprayer, featuring AI Plant-by-Plant™ software and UHP-Spray-Technology™, ensures precise crop treatment. This technology decreases inputs, enhances crop yields, and lowers CO2 emissions.

Employees

200+

Company Stage

Late Stage (Series D)

Total Raised to Date

\$81M

Latest Funding Round

\$52M

Late stage VC (Series C), 9 May 2023,
Valuation Undisclosed

**Category:**

Novel Crop Inputs

Website:

www.elicit-plant.com

Headquarters:

Moulins-sur-Tardoire, France

Year Founded:

2017

Main Investors:

ECBF Management
BPI France
Carbyne Equity Partners
Fund Nouvelle Aquitaine Co-
Investissement
Sofinnova Partners

Corporate Partnerships:

Bayer
Certis-Belchim
BASF

**Company Overview**

AgTech company focused on driving the ecological transition in agriculture by tackling climate change impacts on broad-acre crops. Its proprietary phytosterol-based technology enhances plant stress tolerance and activates natural resistance mechanisms. Proven in large-scale field trials across 3 continents and commercialized in 15+ countries, it offers a unique, validated solution that delivers consistent, strong ROI for farmers.

Employees

85

Company Stage

Late Stage (Series B)

Total Raised to Date

\$70M

Latest Funding Round

\$52M

Late stage VC (Series B), 14 Nov 2024,
Undisclosed Valuation

**Category:**

Animal Technology

Website:

www.entosystem.com

Headquarters:

Sherbrooke, Canada

Year Founded:

2016

Main Investors:

Capital Financière Agricole
EDC Investments
Farm Credit Canada
Sustainable Development
Technology Canada
Fisheries and Food

Corporate Partnerships:

Sanimax
Idealist Capital
Fondaction



entosystem

Company Overview

Producer of high-value insect proteins aimed at reducing food waste and promoting sustainability in the agri-food sector. The company utilizes advanced insect breeding technology to create nutrient-rich insect meals for livestock, including fish and poultry, providing an alternative source of protein and feed through entomological-based solutions.

Employees

27

Company Stage

Late Stage (Series B)

Total Raised to Date

\$115M

Latest Funding Round

\$58M

Late stage VC (Series G), 2 Jan 2024,
Undisclosed Valuation

**Category:**

CEA

Website:

www.gothamgreens.com

Headquarters:

Brooklyn, NY, USA

Year Founded:

2009

Main Investors:

Ares Management
BMO Impact Investment Fund
Commonfund
Kimco Realty Corporation
Manna Tree Partners
RockCreek
The Silverman Group

Corporate Partnerships:

Undisclosed

**Company Overview**

Fresh produce and food brand on a mission to transform the way we approach our food system. A Certified B Corporation™, it sustainably grows high-quality produce using up to 90% less water and 97% less land than conventional farming through its network of high-tech, hydroponic greenhouses in nine U.S. states. It has grown from a single urban rooftop greenhouse to one of the largest producers of hydroponic leafy greens in North America.

Employees

700

Company Stage

Late Stage (Series E)

Total Raised to Date

\$440M

Latest Funding Round

Undisclosed

Late stage VC (Series E), 12 Sep 2022,
Valuation Undisclosed

**Category:**

On-Farm Decision Support,
Automations & Robotics

Website:

www.greeneye.ag

Headquarters:

Tel Aviv, Israel, USA

Year Founded:

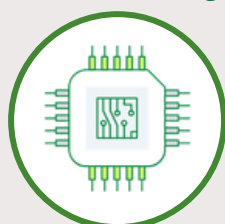
2015

Main Investors:

2B.VC
AGCO
Deep Insight
Farmers Business Network
Hike Ventures
Hyperplane Venture Capital
Iron Nation
Jerusalem Venture Partners
Johnson Venture Partners
KdT Ventures
Koch Disruptive Technologies
One Way Ventures
Orbia Ventures
Panache Ventures
Syngenta Group Ventures
Techstars

Corporate Partnerships:

John Deere
Farmers Business Network

Artificial Intelligence**Company Overview**

Developer of herbicide technology designed to automate and optimize field scouting and pest control. Leveraging machine learning and artificial intelligence, the platform shifts agriculture away from broad, wasteful pesticide application toward real-time, precision spraying. This enables farmers to reduce chemical use, improve efficiency, and make data-driven decisions based on real field insights.

Employees

50

Company Stage

Late Stage (Series B)

Total Raised to Date

\$49M

Latest Funding Round

\$20M

Late stage VC (Series B), 1 Mar 2024,
Undisclosed Valuation

**Category:**

On-Farm Decision Support,
Automations & Robotics

Website:

www.guardian.ag

Headquarters:

Woburn, MA, USA

Year Founded:

2017

Main Investors:

Bayer
Cavallo Ventures
E14 Fund
Fall Line Capital
FMC Ventures
Leaps by Bayer
Neoteny
Pillar VC
Western Growers Center for
Innovation & Technology

Corporate Partnerships:

Wilbur Ellis
Rantizo

**Company Overview**

Developer of autonomous, lithium-battery-powered electric vertical takeoff and landing (eVTOL) systems designed to enable sustainable, large-scale farming. The system supports safe, autonomous operation over farm fields while capturing application data and delivering crop protection, precision agriculture, and aerial utility services. This allows farmers to reduce chemical use and manage crops more efficiently and sustainably.

Employees

55

Company Stage

Late Stage (Series A)

Total Raised to Date

\$47M

Latest Funding Round

\$11M

Late stage VC (Series A), 18 Oct 2023,
\$80M Post Valuation as of 18 Oct 2023

**Category:**

Animal Technology

Website:

www.halterhq.com

Headquarters:

Auckland, New Zealand

Year Founded:

2016

Main Investors:

Bessemer Venture Partners
Blackbird Ventures
DCVC
Founders Fund
GRIDS Capital
Icehouse Ventures
Outset Ventures
Promus Ventures
Ubiquity Ventures

Corporate Partnerships:

Dairy NZ
Fonterra

**Company Overview**

Developer of herd management software designed to modernize dairy farming through real-time behavioral insights. The platform monitors cow activity to predict key events such as heat, lameness, and calving, while also allowing farmers to remotely manage virtual fences and geofencing. This helps improve animal welfare, streamline operations, and boost overall farm productivity.

Employees

180

Company Stage

Late Stage (Series C)

Total Raised to Date

\$103M

Latest Funding Round

\$50M

Late stage VC (Series C), 29 Mar 2023,
\$285M Post Valuation as of 29 Mar 2023

**Category:**

CEA

Website:

www.intelligentgrowthsolutions.com

Headquarters:

Inverkeithing, United Kingdom

Year Founded:

2013

Main Investors:

AgFunder
Cleveland Avenue
GROW Accelerator
Ospraie Ag Science
S2G Investments

Corporate Partnerships:

Vertegrow
Ocado

**Company Overview**

Developer of agricultural technology designed to optimize conditions for vertical farming. The company offers lighting solutions, industrial automation, and power management services, along with other agtech innovations, enabling farmers to enhance crop production and overall efficiency in controlled environment agriculture.

Employees

214

Company Stage

Late Stage (Series C)

Total Raised to Date

\$118M

Latest Funding Round

\$29M

Late stage VC (Series C), 18 Jan 2024,
\$246M Post Valuation as of 31 Jan 2023

**Category:**

Novel Crop Inputs

Website:

www.inari.com

Headquarters:

Cambridge, MA USA

Year Founded:

2016

Main Investors:

Flagship Pioneering
Abu Dhabi Investment Authority (ADIA)
Acre Venture Partners
Banque Pictet
Canada Pension Plan
Investment Board (CPP Investments)
Hanwha Impact
NGS Super
RCM Private Markets fund
Rivas Capital
Sage Hill Investors
State of Michigan Retirement System

Corporate Partnerships:

Becks
Eden Enterprise
InterGrain
MS Technologies
MERTEC

INARI

Company Overview

Inari is the SEEDesign™ company, using new breeding technology to push the boundaries of what is possible by designing nature-positive seeds for a more sustainable food system. A combination of AI-enabled predictive design and a cutting-edge multiplex gene editing toolbox enables Inari to unlock the full potential of seed and advance critical solutions with broad applications for growing more food with fewer resources – providing real benefits to farmers, our planet and the global population.

Employees

300+

Company Stage

Late Stage (Series G)

Total Raised to Date

\$720M+

Latest Funding Round

\$144M

Late stage VC (Series G), 7 Jan 2025
\$2.2B Post Valuation as of 7 Jan 2025

**Category:**

Animal Technology

Website:

www.innovafeed.com

Headquarters:

Paris, France

Year Founded:

2016

Main Investors:

Qatar Investment Authority
(QIA)
Creadev
Temasek
ADM
Cargill

Corporate Partnerships:

Cargill
ADM
BioMar
Barentz

**Company Overview**

Innovafeed is an AgTech company (B Corp, World's GreenTech Company 2025) whose mission is to build more sustainable food systems by returning insects to their natural role within the food chain. They raise Black Soldier Flies, a particularly nutritious and efficient insect capable of upcycling low-grade agricultural byproducts into high-quality, high-performance ingredients with a low environmental impact for animal and plant nutrition.

Employees

350

Company Stage

Late Stage (Series D)

Total Raised to Date

\$490M

Latest Funding Round

\$250M

Late stage VC (Series D), 20 Sep 2022,
Undisclosed Valuation

**Category:**

CEA

Website:www.iunu.com**Headquarters:**

Seattle, WA, USA

Year Founded:

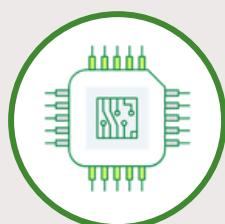
2013

Main Investors:

S2G Investments
Serra Ventures
Taurus Ventures
BootstrapLabs
Flight Ventures
415 Investments
Fortson VC
Fuel Capital
Initialized Capital
Management
Liquid 2 Ventures
NCT Ventures
Second Avenue Partners

Corporate Partnerships:

Priva
BASF Vegetable Seeds
(Nunhems®)
Crop Convergence
Revol Greens

Artificial Intelligence**Company Overview**

Developer of an integrated greenhouse management platform that connects plants, facilities, and teams through a unified interface. Powered by computer vision, it helps growers detect issues early, optimize crop cycles, and ensure accountability in growing practices —delivering actionable insights and precise production control.

Employees

85

Company Stage

Late Stage (Series B)

Total Raised to Date

\$74.16M

Latest Funding Round

\$31.16M

Late stage VC (Series B), 16 Mar 2022,
\$71M Post Valuation as of 16 Mar 2022

**Category:**

CEA

Website:

www.littleleaffarms.com

Headquarters:

Devens, MA, USA

Year Founded:

2015

Main Investors:

TPG's The Rise Fund
Farm Credit Lenders

Corporate Partnerships:

Undisclosed

**Company Overview**

Producer of greenhouse-grown lettuce aimed at delivering fresh, locally grown baby greens year-round. The company offers varieties like arugula, green leaf, red leaf, and blends such as spring mix and baby crispy greens, providing consumers with convenient access to healthy, sustainably grown produce.

Employees

700

Company Stage

Late Stage (Series A-F
Capital Raises Complete)

Total Raised to Date

\$200M

Latest Funding Round

\$350M

Bank Funding, Mar 2025,
Undisclosed Valuation

**Category:**

Novel Crop Inputs

Website:

www.micro-pep.com

Headquarters:

Auzeville Tolosane, France

Year Founded:

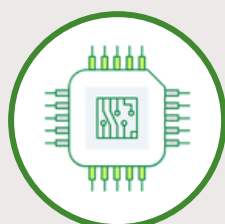
2016

Main Investors:

Corteva
Fall Line Capital
FMC Ventures
Sofinnova Partners
Sparkfood
Supernova Invest
Z Impact Ventures

Corporate Partnerships:

LaTrobe University

Artificial Intelligence**Company Overview**

Developer of biomimetic peptides, biofertilizers, and bioherbicides designed to enhance plant genetics and boost agricultural yields. The company harnesses the power of micro-peptides and their influence on natural plant phenotypes—regulated by microRNAs and proteins—from germination to harvest. This enables farmers to control key growth stages, improve disease resistance, and optimize flowering and productivity.

Employees

50

Company Stage

Late Stage (Series B)

Total Raised to Date

\$69M

Latest Funding Round

\$44M

Late stage VC (Series B), 24 Sep 2024,
\$39.94M Post Valuation as of 28 June 2022

**Category:**

Animal Technology

Website:

www.milkmoovement.com

Headquarters:

Halifax, Nova Scotia, Canada

Year Founded:

2018

Main Investors:

VMG Partners
Better Food Ventures
Dynamo Ventures
Matchstick Ventures
SOSV
SVG Ventures

Corporate Partnerships:

Cargill
ADM
Auchan
Barentz



milk
moovement

Company Overview

Developer of a dairy supply chain platform that connects stakeholders across the entire milk production lifecycle. The platform provides tools for transport tracking, quality monitoring, production oversight, and payment management—offering real-time and historical data to boost transparency, cut waste, and enhance operational efficiency.

Employees

102

Company Stage

Late Stage (Series A)

Total Raised to Date

\$24M

Latest Funding Round

\$20.4M

Series A, 15 Jun 2022,
Undisclosed Valuation

**Category:**

On-Farm Decision Support,
Automations & Robotics

Website:

www.monarchtractor.com

Headquarters:

Livermore, CA, USA

Year Founded:

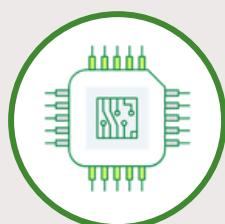
2017

Main Investors:

CTBC Venture Capital
Gaingels
Climate Capital
Mana Ventures
Trimble Ventures
Tri-Valley Ventures
Vernon & Park Capital
At One Ventures
CNH Industrial
Incite Ventures
MUUS Climate Partners
Trajectory Ventures

Corporate Partnerships:

CNH Industrial (New
Holland)
Foxconn

Artificial Intelligence**Company Overview**

Developer of electric, autonomous smart tractors that support the shift to more precise, productive, and sustainable farming. Powered by AI, sensors, and cameras, the tractors detect and address plant issues, estimate yields, and optimize operations—helping farmers cut costs and boost output.

Employees

250

Company Stage

Late Stage (Series C)

Total Raised to Date

\$251.50M

Latest Funding Round

\$133M

Late stage VC (Series C), 22 Jul 2024,
\$518M Post Valuation as of 22 Jul 2024

**Category:**

Novel Crop Inputs

Website:

www.newleafsym.com

Headquarters:

Saint Louis, MO, USA

Year Founded:

2012

Main Investors:

Alumni Ventures
Blue Earth Capital
Gullspang Re:food
Koch
Leaps by Bayer
Lewis & Clark AgriFood
Middleland Capital
Pangaea Ventures
RockPort Capital Partners
S2G Investments
SABIC Ventures
Syngenta Group Ventures
Thrive by SVG Ventures

Corporate Partnerships:

BASF
Verdesian Life Sciences

**Company Overview**

NewLeaf, a biological agtech provider, is focused primarily on PPFMs (pink-pigmented facultative methylotrophs), a unique class of microbes. Through a science-led, data-backed mindset NewLeaf technologies demonstrate the versatility of PPFMs and similar microbes through performance-driven biocontrol, nitrogen use efficiency and methane mitigation solutions. NewLeaf technologies are available in a broad range of crop and use-type.

Employees

50

Company Stage

Late Stage (Series D)

Total Raised to Date

\$122M

Latest Funding Round

\$47M

Late stage VC (Series D), 28 Nov 2023,
\$150M Post Valuation as of 28 Nov 2023

**Category:**

CEA

Website:

www.oishii.com

Headquarters:

Jersey City, NJ, USA

Year Founded:

2016

Main Investors:

Bloom8
JICN
McWin Capital Partners
NTT
Resilience Reserve
SPARX Group
Yaskawa

Corporate Partnerships:

Whole Foods Market
Harris Teeter
Central Market
ShopRite
Sendik's
FreshDirect

Oishii

Company Overview

Operator of indoor vertical farming technology focused on the commercial cultivation of strawberries. The company enables year-round, local, and pesticide-free production in any location by solving for key environmental challenges. Its smart farms sustainably reduce water and land usage, and boost crop yields.

Employees

240+

Company Stage

Late Stage (Series B)

Total Raised to Date

\$200M

Latest Funding Round

\$150M

Late stage VC (Series B), 17 Dec 2024,
\$615M Post Valuation as of 17 Dec 2024

**Category:**

Novel Crop Inputs

Website:

www.pairwise.com

Headquarters:

Durham, NC, USA

Year Founded:

2017

Main Investors:

Aliment Capital
Corteva
Deerfield Management
Leaps by Bayer

Corporate Partnerships:

Bayer Crop Science
Corteva

**Company Overview**

Pairwise is agriculture's leading plant genome-editing powerhouse, with a mission to make plants easier to grow and eat. The company's proprietary Fulcrum™ platform includes advanced gene editing tools to quickly and precisely improve plant traits—like yield, nutrition, and resilience—across a wide range of crops. With over 11 million plants edited, a 72% success rate, and a non-GMO approach ready for global markets, Pairwise helps partners deliver breakthroughs that benefit farmers, consumers, and the planet.

Employees

106

Company Stage

Late Stage (Series C)

Total Raised to Date

\$155M

Latest Funding Round

\$40M

Late stage VC (Series C), 12 Jan 2024,
Undisclosed Valuation

**Category:**

Agribusiness Platform

Website:

www.producepay.com

Headquarters:

Los Angeles, CA, USA

Year Founded:

2014

Main Investors:

Anterra Capital
Astanor Ventures
Avenue Sustainable Solution
Build Collective
CoVenture
Dorm Room Fund
DYDX
Endeavor8
Finistere Ventures
FJ Labs
G2 Venture Partners
Greenhouse Capital Partners
IGNIA Partners
Maiden Lane
Menlo Ventures
Moonshots Capital
Outlander VC
Outpost Ventures
QueensBridge Venture Partners
Rabo Frontier Ventures
Social Leverage
Stratos Technologies
Syngenta Group Ventures
Taurus Ventures
Tribeca Early Stage Partners
Wonder Ventures

Corporate Partnerships:

Four Star Fruit

**Company Overview**

Developer of a financing and trading platform designed to provide sustainable financial solutions for the agricultural industry. The platform offers farmers immediate access to liquidity, real-time pricing data, and connections to key market players—enabling tailored cash flow services and supporting business growth.

Employees

330

Company Stage

Late Stage (Series D)

Total Raised to Date

\$162M

Latest Funding Round

\$38M

Late stage VC (Series D), 1 Sep 2024,
\$128M Post Valuation as of 18 Mar 2021



**Category:**

Novel Crop Inputs

Website:

www.provivi.com

Headquarters:

Santa Monica, CA, USA

Year Founded:

2013

Main Investors:

Aliment Capital
BASF Venture Capital
Bill & Melinda Gates
Foundation DuPont Pioneer
Kairos Ventures
National Science Foundation
Spruce Capital Partners
Vivo Capital
Xeraya Capital

Corporate Partnerships:

Syngenta
BASF
CropLife Latin America

**Company Overview**

Developer of insect pheromone-based solutions designed to safeguard food supplies without leaving toxic residues. The company's products offer a safe, affordable, and sustainable alternative for crop protection, enabling farmers to manage pests naturally and effectively while promoting environmental health.

Employees

135

Company Stage

Late Stage (Series C)

Total Raised to Date

\$212M

Latest Funding Round

\$56M

Late stage VC (Series C), 3 Mar 2021,
\$420M Post Valuation as of 3 Mar 2021



Category:

On-Farm Decision Support,
Automations & Robotics

Website:

www.regrow.ag

Headquarters:

Durham, NH, USA

Year Founded:

2016

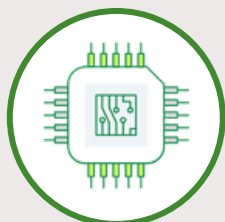
Main Investors:

Airtree Ventures
Artesian Venture Partners
Cargill
Costanoa Ventures
GrainInnovate
Hawktail
ID Capital
M12
Main Sequence Ventures
Rethink Impact
Space Capital
Tenacious Ventures
TIME Ventures
Galvanize Climate Solutions

Corporate Partnerships:

Cargill
General Mills
Kellogg's
PepsiCo
Nutrien

Artificial Intelligence



Company Overview

Developer of a SaaS platform designed to make regenerative agriculture ubiquitous worldwide. The platform enables agricultural supply chain stakeholders to ensure supply chain integrity and operational resilience by accelerating GHG emissions reduction, scaling regenerative farming practices, and driving climate adaptation. It empowers the entire supply chain—from growers to global food companies—to adopt and support regenerative agriculture at scale.

Employees

98

Company Stage

Late Stage (Series B)

Total Raised to Date

\$59M+

Latest Funding Round

Undisclosed

Late stage VC (Series B), Feb 2025,
Undisclosed Valuation

**Category:**

On-Farm Decision Support,
Automations & Robotics

Website:

www.seetree.ai

Headquarters:

Tel Aviv, Israel

Year Founded:

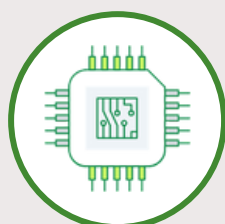
2017

Main Investors:

Ataria
Atento Capital
Canaan Partners Israel
Hanaco Ventures
HSBC Venture & Growth
Investments
iAngels
Kubota
Mindset Ventures
Orbia Ventures
OurCrowd
Smart Agro
The Founders Kitchen,

Corporate Partnerships:

John Deere
Citrosuco

Artificial Intelligence**Company Overview**

Developer of an agricultural analytics platform designed to optimize farm management. The company offers an end-to-end solution that leverages AI, machine learning, multi-sensor data, and drone imaging to build a multilayered intelligence system capable of identifying, analyzing, and organizing data from millions of trees. This enables farmers to efficiently allocate resources by detecting weak trees within clusters—improving productivity at an affordable cost.

Employees

61

Company Stage

Late Stage (Series C)

Total Raised to Date

\$66M

Latest Funding Round

\$18M

Late stage VC (Series C), 17 Jan 2024,
\$69M Post Valuation as of 8 Dec 2020

**Category:**

On-Farm Decision Support,
Automations & Robotics

Website:

www.sentera.com

Headquarters:

Saint Paul, MN, USA

Year Founded:

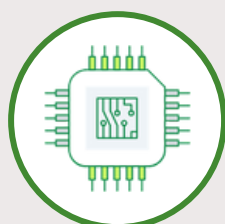
2014

Main Investors:

AgFunder
Argonautic Ventures
Conti Ventures
iSelect Fund
Middleland Capital
S2G Investments
Sony Innovation Fund
USDA

Corporate Partnerships:

Corteva Agriscience
Nutrien Ag Solutions

Artificial Intelligence**Company Overview**

Developer of agricultural data analytics technology designed to deliver agronomic insights that enhance cultivation outcomes. The company leverages machine learning within a robust data science ecosystem to provide scalable, plant-level analytics, supported by aerial imagery from in-house drone services. This enables clients to collect data, generate insights, and take informed actions to optimize performance in the field.

Employees

112

Company Stage

Late Stage (Series C)

Total Raised to Date

\$55M

Latest Funding Round

Undisclosed

Late stage VC (Series C), 2 May 2023,
Undisclosed Valuation

**Category:**

Animal Technology

Website:

www.sistema.bio

Headquarters:

Mexico City, Mexico

Year Founded:

2010

Main Investors:

Co_Capital
DILA Capital
Endeavor Catalyst
Novastar Ventures
Shell Foundation,

Corporate Partnerships:

One Acre Fund
Heifer International

**Company Overview**

Manufacturer of prefabricated modular biodigester systems designed to tackle poverty, food insecurity, and climate change. The systems use anaerobic bacteria to convert animal manure and organic waste into methane gas and organic fertilizer, which can be used for cooking, heating, and electricity generation—empowering farmers to turn waste into renewable energy and sustainable fertilizer.

Employees

379

Company Stage

Late Stage (Series C)

Total Raised to Date

\$57M

Latest Funding Round

\$19M

Late stage VC (Series C), 14 Jan 2025,
Undisclosed Valuation

**Category:**

On-Farm Decision Support,
Automations & Robotics

Website:

www.solinftec.com

Headquarters:

Sao Paulo, Brazil

Year Founded:

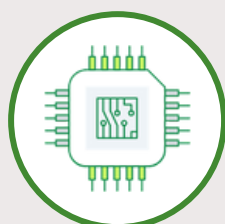
2007

Main Investors:

Arar Capital
Circularis Partners
AgFunder

Corporate Partnerships:

AGCO Corporation
GROWMARK
Ag Partners Cooperative
Ceres Solutions
Planet Labs
McKinney Corporation

Artificial Intelligence**Company Overview**

Developer of a digital agriculture platform designed to optimize farm operations and ecosystem management. The platform combines real-time monitoring with advanced data analytics and crop-specific algorithms, enabling farmers to make timely decisions, boost efficiency, and minimize environmental impact.

Employees

807

Company Stage

Late Stage (Series D)

Total Raised to Date

\$171.75M

Latest Funding Round

\$51.75M

Late stage VC (Series D), 14 Mar 2025,
Undisclosed Valuation

**Category:**

Novel Crop Inputs

Website:

www.sound.ag

Headquarters:

Emeryville, CA, USA

Year Founded:

2013

Main Investors:

BMO
Foundation Cavallo Ventures
Fall Line Capital
Leaps by Bayer
Northpond Ventures
S2G Investments
Syngenta Group Ventures

Corporate Partnerships:

Mosaic

**Company Overview**

Sound develops bio-inspired products that enhance nutrient availability and improve soil health, leading to increased crop yields and reduced reliance on synthetic fertilizers. Sound's products include low volume chemistries that stimulate existing soil microbes to unlock nitrogen, phosphorus and fungi that expand the root system, improving the plant's access to water and nutrients. They are primarily in the US, although recently launched in Brazil, Argentina and Kenya.

Employees

70

Company Stage

Late Stage (Series D)

Total Raised to Date

\$180M

Latest Funding Round

\$100M

Late stage VC (Series D), 17 Dec 2024,
\$400M Post Valuation as of 17 Dec 2024



Category:

On-Farm Decision Support,
Automations & Robotics

Website:

www.taranis.com

Headquarters:

Westfield, IN, USA

Year Founded:

2015

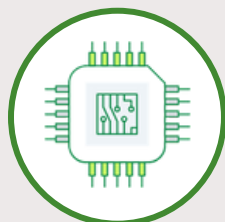
Main Investors:

3G Capital Investments
Cavallo Ventures
Cognitiv Ventures
Finistere Ventures
Hitachi Ventures
iAngels
Inven Capital
K3 Ventures
Micron Ventures
Microsoft for Startups
Mindset Ventures
Mitsubishi UFJ Capital
MSW Capital
Nutrien
ODINE
OurCrowd
Presidio Ventures
RIO Ventures Holdings
Seraphim Space
SHIFT Ventures
UMC Capital
Vertex Growth
Vertex Ventures Israel
Viola Ventures
Wilbur-Ellis

Corporate Partnerships:

BASF
Nutrien
John Deere Operations Center

Artificial Intelligence



TARANIS

Company Overview

Developer of an AI-powered crop analytics platform designed to provide demand intelligence for agribusinesses. The platform leverages computer vision, data science, and deep learning to detect early signs of weeds, nutrient deficiencies, disease, insect infestations, water stress, and equipment issues—enabling farmers to make timely, informed decisions and boost yields.

Employees

171

Company Stage

Late Stage (Series D)

Total Raised to Date

\$100M

Latest Funding Round

\$40M

Late stage VC (Series D), 7 Sep 2022,
\$91.44M Post Valuation as of 14 May 2020

**Category:**

Agribusiness Platform

Website:

www.traivefinance.com

Headquarters:

São Paulo, Brazil

Year Founded:

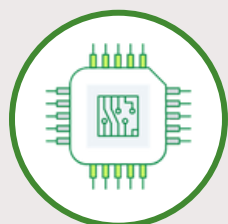
2018

Main Investors:

Bossa Invest
FMC Ventures
Astella Investimentos
Founder's First
ScaleUP Ventures
Swiss Pampa
Tiger Global Management
YellowRockets.vc
Yellow Rocks!
SP Ventures
SparkLabs Group
Bread & Butter Ventures

Corporate Partnerships:

BASF
Verqor
FMC Ventures

Artificial Intelligence**Company Overview**

Developer of a finance platform that links the agricultural value chain to capital markets. Leveraging big data and AI, it delivers real-time insights beyond traditional credit scores—factoring in agronomic, market, and behavioral risks—to reduce friction for producers and offer greater security for lenders.

Employees

100

Company Stage

Late Stage (Series A)

Total Raised to Date

\$41.10M

Latest Funding Round

\$20M

Series A, 23 Feb 2024,
\$70M Post Valuation as of 23 Feb 2024

**Category:**

Novel Crop Inputs

Website:

www.tropic.bio

Headquarters:

England, United Kingdom

Year Founded:

2016

Main Investors:

GG 1978
Agronomics
Autochrome Ventures
Bloom8
Genoa Ventures
Skyviews Life Science
Aliment Capital
Bits x Bites
Emerald Technology Ventures
Five Seasons Ventures
Midven
Future Planet Capital

Corporate Partnerships:

BASF
Corveva Agriscience
Genus Plc
Syngenta Vegetable Seeds
Pairwise
British Sugar

Tropic

Company Overview

Developer of gene editing technology aimed at boosting cultivation efficiency and addressing rising food demand. Using non-GMO gene-editing methods, the technology accelerates crop breeding and enables local growers to produce improved, organic crops faster—helping meet market needs sustainably.

Employees

164

Company Stage

Late Stage (Series C)

Total Raised to Date

\$75.41M

Latest Funding Round

\$35M

Late stage VC (Series C), 6 Jul 2022,
\$86.23M Post Valuation as of 1 April 2020

**Category:**

On-Farm Decision Support,
Automations & Robotics

Website:

www.verdantrobotics.com

Headquarters:

Hayward, CA, USA

Year Founded:

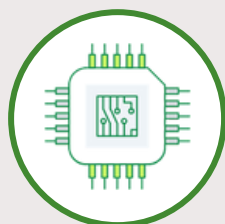
2018

Main Investors:

11k Ventures
AgFunder
Autotech Ventures
Ayana Capital
Cavallo Ventures
Cleveland Avenue
DCVC Bio
E Squared
Future Ventures
SeaX Ventures
Tesseract Ventures
USDA
WaterLemon VC
Western Growers Center for
Innovation & Technology

Corporate Partnerships:

Valley Irrigation
RDO Equipment

Artificial Intelligence**Company Overview**

Verdant Robotics is advancing precision agriculture with AI-powered technology that maximizes grower efficiency and sustainability. Its SharpShooter system aims before it applies—delivering pinpoint weeding, thinning, and input applications. By cutting labor costs up to 85% and chemical use up to 99%, Verdant drives rapid ROI and is now scaling across top U.S. specialty farms.

Employees

30

Company Stage

Late Stage (Series A)

Total Raised to Date

\$52M

Latest Funding Round

\$46.5M

Late stage VC (Series A), 29 Nov 2022,
\$125M Post Valuation as of 29 Nov 2022



**Category:**

Novel Crop Inputs

Website:

www.vestaron.com

Headquarters:

Durham, NC, USA

Year Founded:

2005

Main Investors:

Anterra Capital
Argonautic Ventures
Biosciences Research and
Commercialization Center
Cavallo Ventures
Conti Ventures
Eight Roads
Endeavor8
Gershon Capital
iSelect Fund
Michigan Accelerator Fund 1
Michigan Capital Network
Ventures Northpond Ventures
Novo Holdings
Pangaea Ventures
Plug and Play Tech Center
Sandbox Industries
Southwest Michigan First Life
Science Fund
Syngenta Group Ventures
Trout Creek Ventures

Corporate Partnerships:

Certis Biologicals
BioAg Alliance

**Company Overview**

Developer of peptide-based biopesticides focused on enhancing crop protection with safe, effective, and sustainable solutions. The company offers biologically derived products that are non-toxic to humans, wildlife, and pollinators, providing growers with innovative chemistries that target pests while minimizing environmental impact.

Employees

51

Company Stage

Late Stage (Series C)

Total Raised to Date

\$282M

Latest Funding Round

\$92M

Late stage VC (Series C), 6 Feb 2025,
\$453M Post Valuation as of 6 Feb 2025



**Category:**

Novel Crop Inputs

Website:

www.vivecrop.com

Headquarters:

Mississauga, Canada

Year Founded:

2006

Main Investors:

EDC Investments
Emmertech
iSelect Fund
Middleland Capital
Pivot Bio
Plaza Ventures
Sustainable Development
Technology Canada
Tera Capital
Venture Ontario

Corporate Partnerships:

CHS Inc.
Helena Agri-Enterprises

**Company Overview**

Operator of a crop protection platform designed to boost farm productivity and sustainability. The company's products are formulated to mix easily with liquid fertilizers and other agrochemicals, effectively managing key diseases in crops like sugarbeets, dry beans, alfalfa, potatoes, and corn. This enables farmers to optimize chemical interactions with soil, foliage, and nutrients for improved results.

Employees

90

Company Stage

Late Stage (Series C)

Total Raised to Date

\$75M

Latest Funding Round

\$34M

Late stage VC (Series C), 23 May 2024,
Undisclosed Valuation

**Category:**

Animal Technology

Website:

www.vytelle.com

Headquarters:

Lenexa, KS, USA

Year Founded:

2020

Main Investors:

Grosvenor Food and Ag
Tech
Forage Capital
Mountain Group Partners
Fulcrum Global Capital
Open Prairie
iiM
KCRise Fund
Serra Ventures

Corporate Partnerships:

ABS Global
STgenetics

**Company Overview**

Vytelle is a data enabled biotechnology company reshaping how cattle producers worldwide optimize their herds. Through Vytelle's integrated technology platform, generations of genetic gain can be made in a few years with fewer inputs.

Employees

134

Company Stage

Late Stage (Series B)

Total Raised to Date

\$32M

Latest Funding Round

\$20M

Late stage VC (Series B), 3 Apr 2023,
Undisclosed Valuation

**Category:**

Animal Technology

Website:

www.windfall.bio

Headquarters:

San Mateo, CA, USA

Year Founded:

2022

Main Investors:

Global Brain
Incite Ventures
Positive Ventures
Prelude Ventures
B37 Ventures
Bessemer Venture Partners
Cavallo Ventures
Celcius Industroes
Mayfield Fund
MCJ
SOSV
Ulu Ventures

Corporate Partnerships:

FERMWORX

Windfall Bio

Company Overview

Developer of a digital farm management platform tailored for the agri-food sector. Combining sensors, satellite data, and smart algorithms, the platform helps optimize irrigation, fertilization, crop protection, and machinery use—all from a single interface. It supports digital transformation through connected tools, expert guidance, and training for farmers and stakeholders alike.

Employees

42

Company Stage

Late Stage (Series A)

Total Raised to Date

\$37M

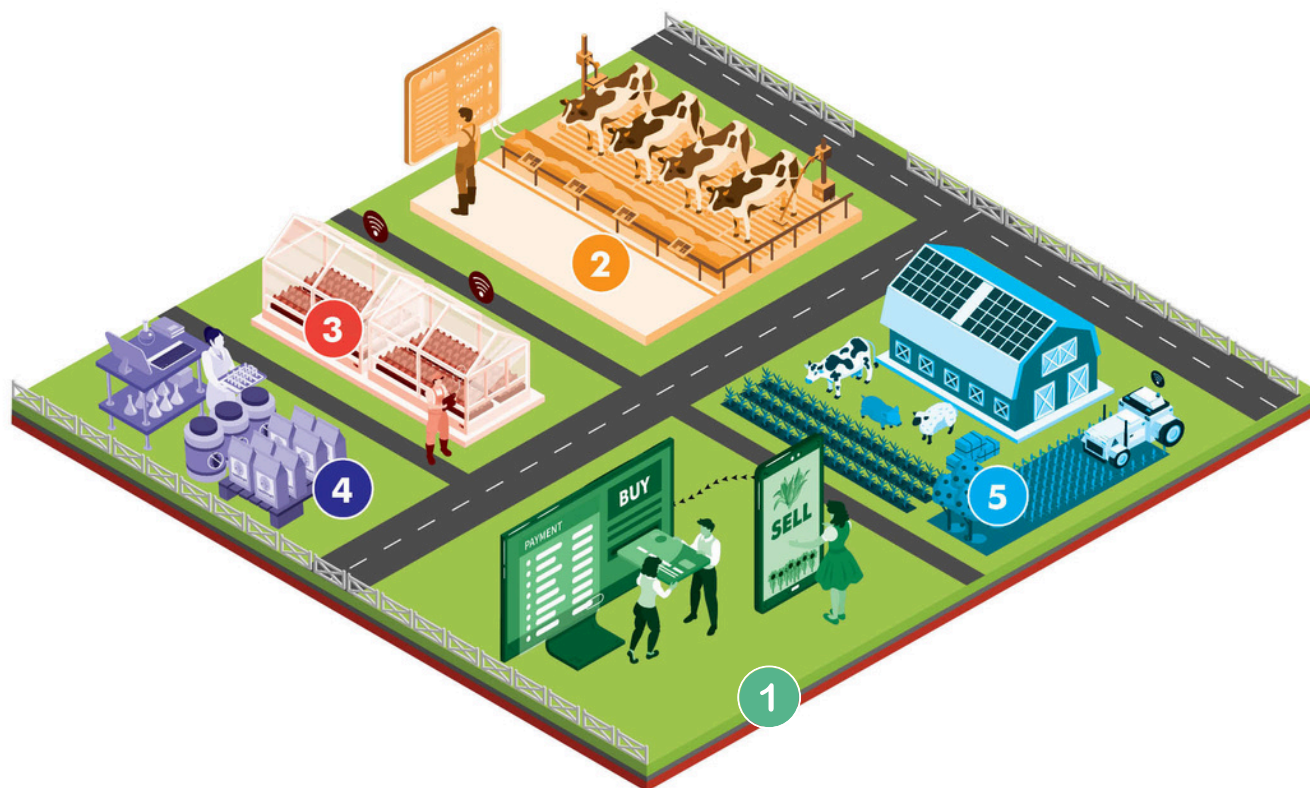
Latest Funding Round

\$28M

Late Stage (Series A), 8 Apr 2024,
undisclosed Valuation

2025

THRIVE^{TOP} 50 AgTech Market Map



1 Agribusiness Platform

acretreader Agreena AgVend ARABLE BUSHEL CIBO DeHaat PRODUCEPAY traive

2 Animal Technology

AgriWebb BeeHero CH4 GLOBAL entosystem Halter
INNOVAFEED milk moovement SYSTEMA Vytelle W Windfall Bio

3 CEA (Controlled Environment Agriculture)

GREEN STEPS IGS IUNU little leaf Oishii

4 Novel Crop Inputs

APHEA bio Elicit Plant INARI micropep NowLeaf pairwise
PROVIVI Sound Tropic VESTARON

5 On-Farm Decision Support, Automations & Robotics

bluewhite BURRO CARBON ROBOTICS CeresAI EARTHOPTICS ecorobotix Greeneye GUARDIAN AGRICULTURE
MONARCH regrow See Tree sentera SOLINFTEC TARANIS VERDANT ROBOTICS

THRIVE^{TOP} 50

AgTech RISING STARS

The AgTech Rising Stars are promising early-stage companies that stand out for their innovation and potential. Unlike the more established Top 50, these startups are at an earlier stage of growth but have already demonstrated exceptional vision, commitment, and a strong drive to advance the AgTech ecosystem.

Selected from a competitive pool of hundreds, they represent the next wave of transformative ventures in the industry. With time, resources, and the right support, we believe these companies are well-positioned to become future scale-ups—and we're excited to watch their journeys unfold.



agrematch

Website:

www.agrematch.com

Company Overview

AI-powered AgTech company revolutionizing the discovery of sustainable crop protection and nutrition compounds.

Total Raised to Date

\$9.6M; As of September 2023

Headquarters

Israel



Agteria[®] Biotech

Website:

www.agteria.com

Company Overview

A sustainable, patent-pending molecule that significantly reduces methane emissions from cows. The solution is designed to be scalable, cost-effective, and seamlessly integrated into the existing value chain.

Total Raised to Date

\$7.74M; As of 24 Feb 2025

Headquarters

Sweden



Brilliant Harvest

Website:

www.brilliantpowered.com

Company Overview

AI helpdesk platform for equipment dealers that automates support, centralizes knowledge, and improves team efficiency and customer experience.

Total Raised to Date

Undisclosed

Headquarters

Canada



EFPOLYMER

Website:

www.efpolymer.com

Company Overview

Manufacturer of natural water-retention polymers from organic waste, helping farmers reduce irrigation needs by storing and releasing water efficiently.

Total Raised to Date

\$11.36M; As of 2025

Headquarters

Japan



EMGENISYS

Website:

www.emgenisys.co

Company Overview

Software analyzing embryo activity to boost cattle breeding success and support efficient, sustainable livestock production.

Total Raised to Date

\$2.7M; As of Sep 2024

Headquarters

United States



Website:

www.heritable.ag

Company Overview

AgTech company using AI, predictive breeding, and biotech to lower costs and accelerate timelines for development of all crops, opening up expansive opportunities for agriculture.

Total Raised to Date

Undisclosed

Headquarters

United States



Website:

www.micronagritech.com

Company Overview

On-site animal testing platform detecting parasites instantly, enabling targeted treatment to reduce resistance, cut costs, & improve livestock health and yield.

Total Raised to Date

\$5.4M; As of September 2023

Headquarters

Ireland



Website:

www.puna.bio

Company Overview

Manufacturer of sustainable biological products that improve yields, enhance crop quality, and restore degraded soils for increased agricultural productivity.

Total Raised to Date

\$17.1M; As of 2025

Headquarters

Argentina



Website:

www.solastabio.com

Company Overview

Developer of biological pesticides for resistant pests, providing eco-friendly, effective crop protection to boost yields and reduce chemical use.

Total Raised to Date

\$20.22M; As of 2024

Headquarters

United Kingdom



Website:

www.verdi.ag

Company Overview

Developer of scalable control systems using geospatial analytics to automate plant-level irrigation and fertilization for precision farming in tough environments.

Total Raised to Date

\$7.2M; As of 2025

Headquarters

Canada

thank you

TO OUR PARTNERS



THRIVE
by SVG VENTURES

Join our Network

www.thriveagrifood.com | thrive@svgventures.com | [@THRIVEAgriFood](https://twitter.com/THRIVEAgriFood)
750 University Ave #260, Los Gatos, CA 95032